

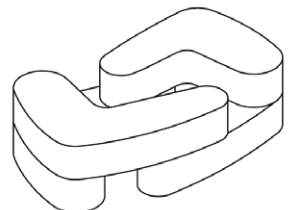
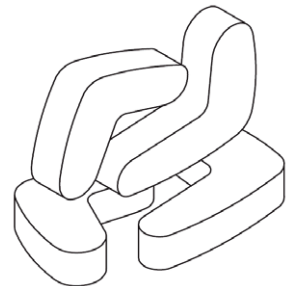
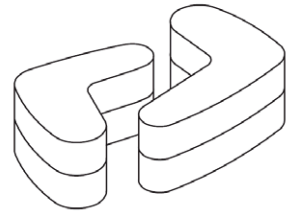
LTD_1

Office Building and Health Centre, Hamburg
Competition 1st prize, 2003 – Completion 2008
BDA Prize Hamburg-Mention 2008
DGNB Gold Certification, Seal of Approval for sustainable architecture, 2010



Courtyard, Photo © J. Willebrand

Location	Lübeckertordamm 1–3, D–20099 Hamburg, Germany
Client	LTD Lübeckertordamm Entwicklungs-GmbH c/o Versicherungskammer Bayern Maximilianstraße 53, D-80538 München
Architect	Pysall Ruge Architekten
Structural engineering	Lichtenau Himburg Tebarth Bauingenieure, Berlin
Mechanical & Electrical	Reese Beratende Ingenieure VDI, Hamburg
Brief	Office building and retail area for tenants related to health care, reception area, office areas with open zones, multi-purpose, offices, individual offices, health centre, retail area, underground car parking
Scope of Services	Competition design, establishing the basis of the project, preliminary design, final design, approval documents, execution documents, participation in tendering and contract award as well as artistic site supervision, HOAI phase 1, 2, 3, 4, 5 as well as parts of phase 6, 7 and 8
Size	26.643 sqm
Duration	2002 – 2008
Completion	2008, DGNB Gold Certification – 2010

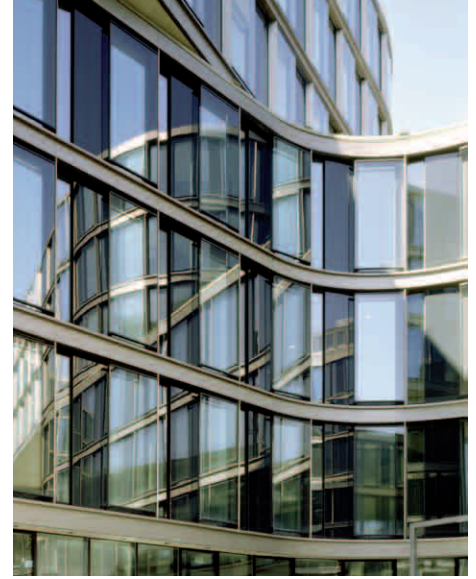


LTD_1

Office Building and Health Centre, Hamburg
Competition 1st prize, 2003 – Completion 2008
BDA Prize Hamburg-Mention 2008
DGNB Gold Certification, Seal of Approval for sustainable architecture, 2010



Elevation Lübeckertordamm, Photo © J. Willebrand



Façade detail, Photo © K. Frahm



Garden elevation, Photo © J. Willebrand



Tenants` Lobby, Photo © K. Frahm

In the context of the revitalization of the St. Georg district of Hamburg, 120 dwelling units and an office/administrative building of 26.000 m² on a site next to the Hamburg St. Georg hospital have been realized.

The new residential buildings follow and continue the form of the hospital wing. A generously proportioned, noise-protecting inner courtyard benefits both these residential buildings and the new office building in equal measure.

The office building's configuration, composed of four boomerang-shaped elements laid over each other, creates a representative entrance situation, an interior courtyard,

and a transitional space to the residential courtyard in the rear. As a result of this building form, every office has direct sunlight and an unobstructed view.

For the office building, ecologically objectionable materials are used throughout. The new building is a condensed form, and its surface area is optimized. Two service and sanitary cores lie inside and allow flexible use and simple adjustments to future requirements of the users. The building's materials possess the „Blue Angel“ certification and are thus ecologically friendly. An innovative staggered, highly insulating external glass skin, a naturally ventilated double façade, low energy heating and concrete

core cooling, as well as an energyoptimized lighting concept, reduce the primary energy requirements.