

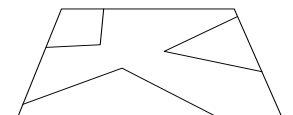
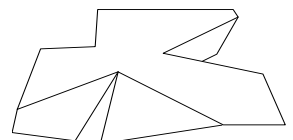
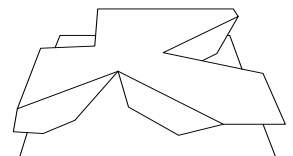
# Muzeum Lotnictwa

Museum for Aviation and Aviation Exhibition Park, Krakow – Poland  
International Competition 1st prize 2005, Completion 2010



Main elevation, Photo © J. Willebrand

Location	Al. Jana Pawla II 39, 30–969 Krakow, Poland
Client	Muzeum Lotnictwa Polskiego W Krakowie Al. Jana Pawla II 39 30–969 Krakow, Poland
Architect	Pysall Ruge Architekten with Bartłomiej Kisielewski
Structural Engineering	Arup, Poland
Mechanical & Electrical	Arup, Poland
Landscape architects	ST raum a, Berlin
Brief	Museum of Aviation with exhibition area, cinema, conference area, library, museum shop, cafeteria, restoration area und administration. Transformation of the airport into an aviation park, exterior exhibition, recreation area.
Scope of Services	General planner, International Competition 1st prize 2005, establishing the basis of the project, preliminary design, final design, building permit, application and approval documents, execution documents, tendering, site supervision, contract award and artistic site supervision, HOAI phases 1 – 8.
Size	Museum of Aviation GFA4.504 sqm Aviation Exhibition Park 6,14 hectares
Duration	2005 – 2010
Completion	2010

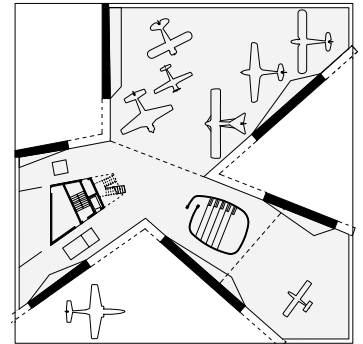


# Muzeum Lotnictwa

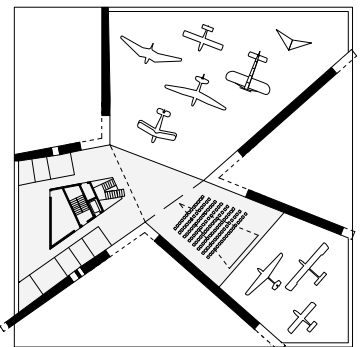
Museum for Aviation and Aviation Exhibition Park, Krakow – Poland  
International Competition 1st prize 2005, Completion 2010



Main exhibition wing, Photo © J. Willebrand



1st floor



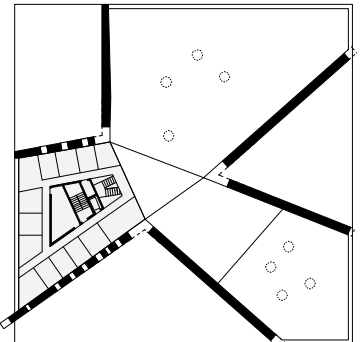
2nd floor



Education wing, Photo © J. Pierzchala



Cinema, Photo © J. Willebrand



3rd floor

The idea of flying, the spirit of the place, the structure of the historic airfield: the new building for the Museum of Aviation takes up these references intellectually and synthesizes them into an expressive and emblematic structure. The old hangars set the modular scale for the footprint (60 x 60 m) and the height (12 m) for the new building.

Developed from this modular scale, cut out and folded as if made like a paper airplane, a large structure has arisen: triangular wings made of concrete and yet as light as a wind-vane or propeller. The size and orientation of the wings was developed from three different functions.

4500 m<sup>2</sup> of usable area on three floors is for immediate disposition. Intertwining spaces provide good orientation for the visitor.

Entering the building one has the choice to go into the education wing, with a voluminous 3D cinema, or directly into the exhibition area with the planes. The building's wings are generously glazed, opening in all directions.

The exhibition thus links visually with the landscape around it and offers a view of the apron and the planes on display outdoors. The airplanes in the north wing do not seem enclosed, but rather placed in shelter, ready to roll out onto the runway at any time.

The first floor is occupied by a conference room seating 150 people, a library, a multimedia section and a restaurant with bar overlooking the exhibition. Arup International in Cracow planned the mechanical and electrical services, as well the structural services for the project.