

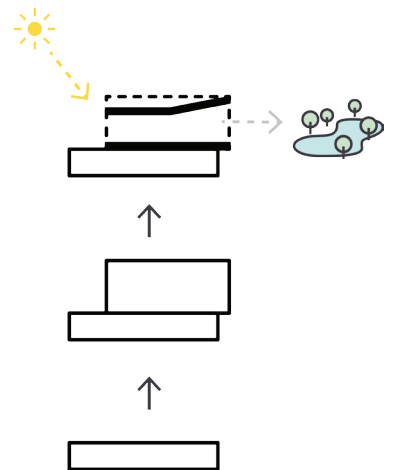
# House O

New construction of a detached house in hybrid construction as an energy-efficient house in Abeno-ku, Osaka, Japan, 2020



North perspective, Photo © Sadao Hotta

|                        |  |
|------------------------|--|
| Location               | Abeno-ku, Osaka<br>Japan   |
| Client                 | private  |
| Local Architect        | Soichi Yoshida Architects  |
| Structural Engineering | New Constructor's Network Co., Ltd.  |
| General Contractor     | Masaki Construction Company  |
| Brief                  | New construction of a detached house in hybrid construction as an energy-efficient house     |
| Scope of services      | Design planning, execution planning, artistic site supervision, HOAI phases 1 to 6, partly 8 |
| Size                   | GFA: 199 sqm   |
| Completion             | 2020   |



# House O

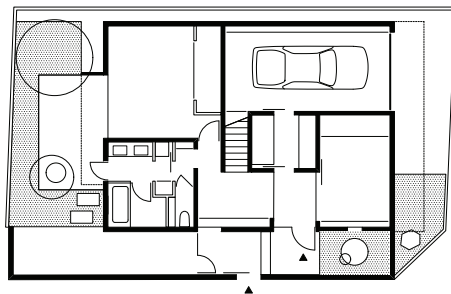
New construction of a detached house in hybrid construction as an energy-efficient house in Abeno-ku, Osaka, Japan, 2020



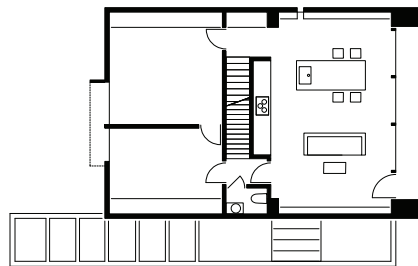
Kitchen, Dining, Living Photo © Sadao Hotta



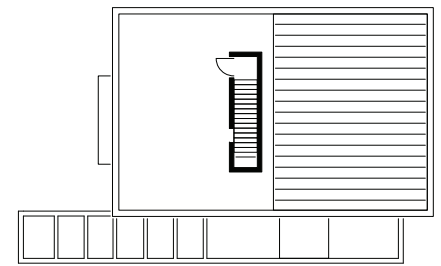
North perspective from the lake, Photo © Katsuya Taira



1st Floor



2nd Floor



Rooftop

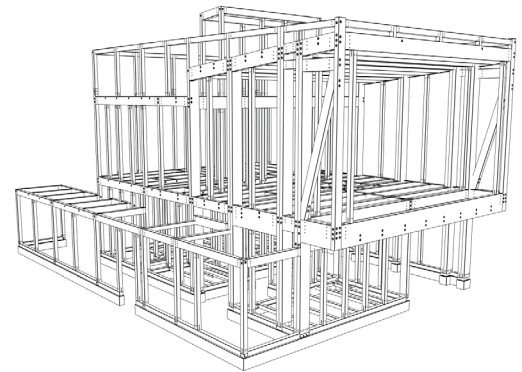
A pioneering hybrid construction of steel-reinforced wooden frames forms an earthquake-resistant lightweight for a sustainable, family-friendly home in central Osaka.

Through the space-defining panoramic window, the unobstructed view extends over the adjacent Peach Lake (Momogaike Park) to the borrowed (urban) landscape with Japan's tallest skyscraper.

The wooden frame construction spans 8.50m column-free on the upper floor over the open living, dining and kitchen area with a clear ceiling height of up to 4.50m. The wooden structure is clad with a high-quality, grey-coloured rubbing plaster and is structured by the studio window to the north and climate-friendly external shading to the south.

On the ground floor there is a reception room for guests, a Japanese bathroom, a pocket garden and the garage. The central staircase leads to the introverted roof terrace.

An energy-efficient ventilation system with heat and humidity recovery and supporting central air conditioning as well as a gas-powered under-floor heating system create a comfortable living climate in each of the four distinct seasons.



Construction

© New Constructor's Network Co., Ltd.